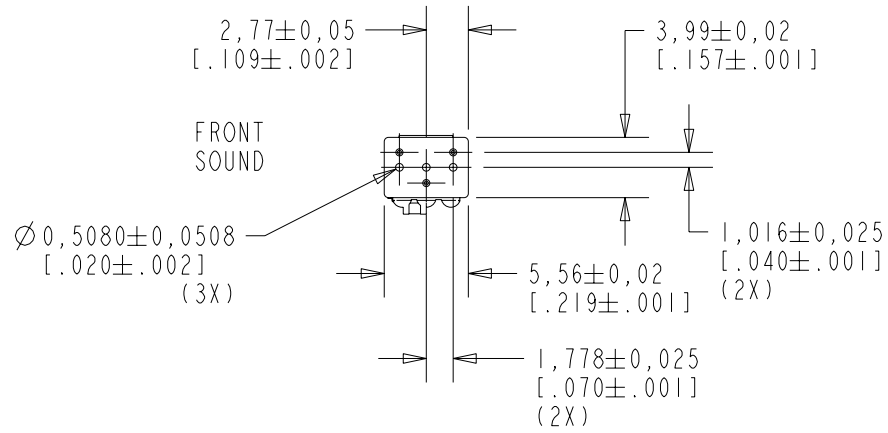
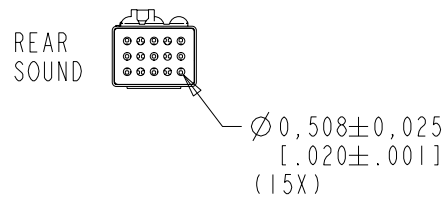
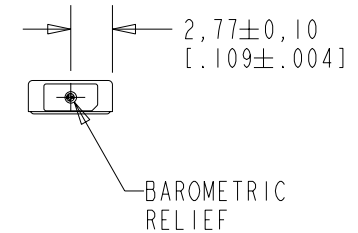
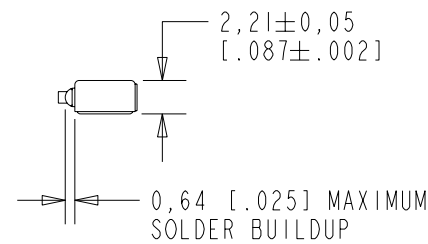
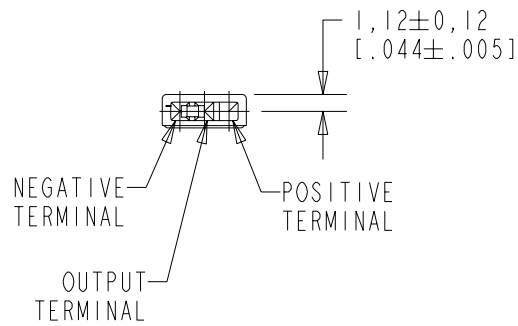


WP-25993-D63
SHT 1.1



NOTE:

1. INCREASED PRESSURE AT THE FRONT SOUND INLET CAUSES A POSITIVE GOING VOLTAGE TO APPEAR AT THE OUTPUT TERMINAL, RELATIVE TO THE NEGATIVE TERMINAL.



NOMINAL WEIGHT
.13 GRAM

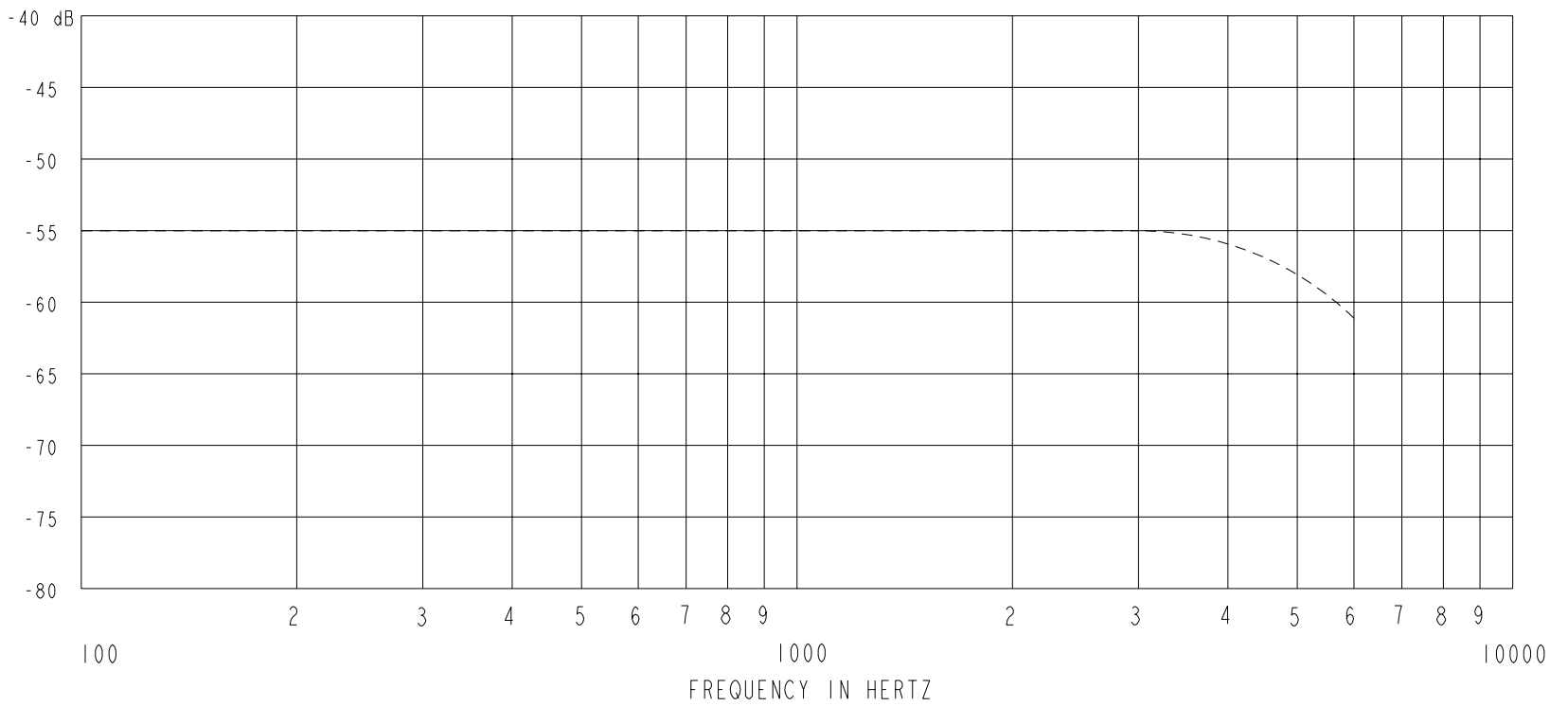
DIMENSIONS IN MILLIMETERS [INCHES]

KNOWLES ELECTRONICS
ITASCA, ILLINOIS U.S.A.

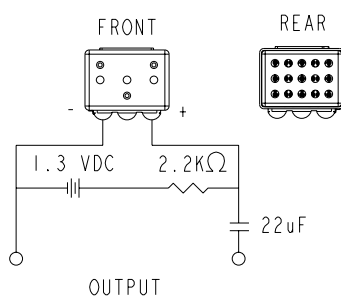
Revision	C.O. #	Implementation Date	RELEASE LEVEL	REVISION
A	MI0101749	12-28-07	Released	A

SCALE: 2:1		DR. BY: SDZ	DATE: 12-28-07
DO NOT SCALE DRAWING		CK. BY: GJP	DATE: 1-02-07
TITLE: MICROPHONE	WP-25993-D63	APP. BY: GJP	DATE: 1-02-07
OUTLINE DRAWING	SHT 1.1		

SENSITIVITY IN dB RELATIVE TO 1.0 VOLT/0.1 Pa (N/M²)
FOR CONDITIONS SHOWN BELOW.



FREQUENCY	SENSITIVITY			DEVICE CONFORMITY	
	MIN.	NOM.	MAX.	RANGE OF DEVIATION FROM 1KHz	
100	---	-55.0	---	-2.0	+2.0
1000	-59.0	-55.0	-51.0	0.0	0.0
4000	---	-57.0	---	-5.0	+1.0



NOTES:

- CASE CONNECTED TO NEGATIVE TERMINAL.
- MICROPHONE TO BE FUNCTIONAL WITH 10 VDC SUPPLY.
- SENSITIVITY VALUES INDICATED ON THIS SPECIFICATION ARE VALID AT 50% HUMIDITY.
- PRESSURE DIFFERENCE SENSITIVITY TESTED WITH REAR SOUND PORT SEALED TO AIR VOLUME OF AT LEAST 0.5 CC.

PORT LOCATION	DC SUPPLY	AMPLIFIER CURRENT DRAIN	OUTPUT IMPEDANCE OHMS		
			MIN.	NOM.	MAX.
KA, JA	1.3V	300uA MAX.	1000	2000	3000

Revision	C.O. #	Implementation Date	RELEASE LEVEL	REVISION
A	MI0101749	12-28-07	Released	A

KNOWLES ELECTRONICS
ITASCA, ILLINOIS U.S.A.

WHEN TEST LIMITS ARE USED TO ESTABLISH INCOMING INSPECTION ACCEPTANCE/REJECTION CRITERIA, CORRELATION OF TEST EQUIPMENT WITH KNOWLES IS ALSO REQUIRED FOR ELIMINATION OF EQUIPMENT AND TEST METHOD VARIATION		DR. BY	DATE
TITLE: MICROPHONE PERFORMANCE SPECIFICATION		SDZ	12-28-07
		GJP	1-02-07
WP-25993-D63 SHT 2.1		APP. BY	DATE
		GJP	1-02-07